

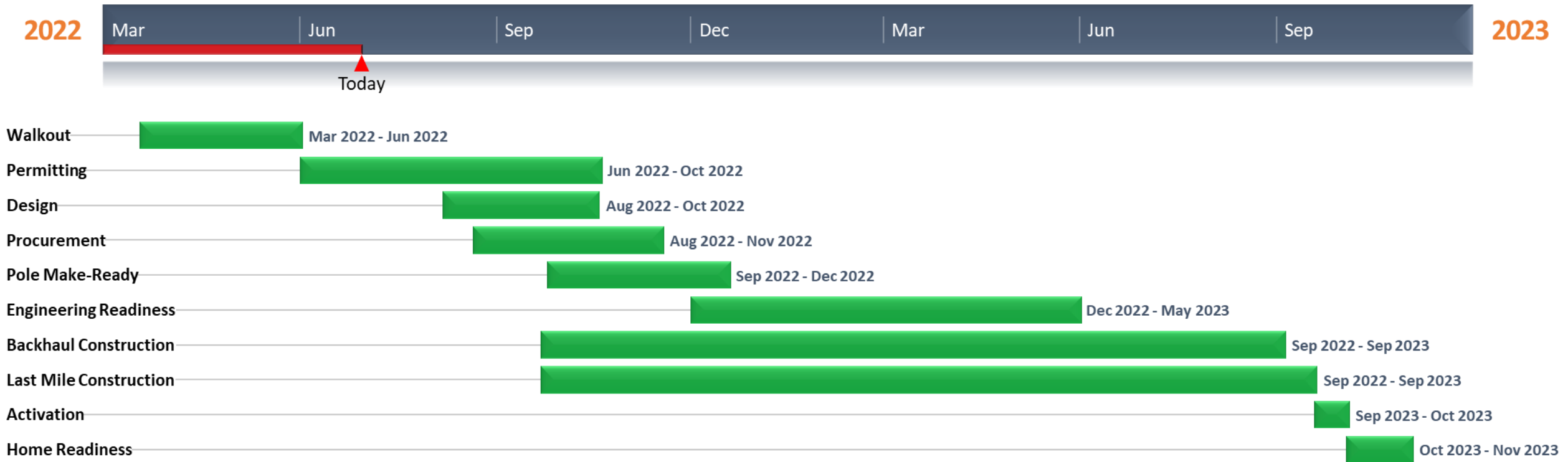
## ARPA Yavapai County Broadband Project Question and Answers as of 7.2.22

Q 24 7.2.22 **Has Altice developed a “Project Schedule” yet?** Yes, they have. The contract required the vendors to have a Project Schedule to the county by the close of business on June 30<sup>th</sup>. They complied with that requirement and the Yavapai County Project Manager has accepted their schedule. It is preliminary in nature and provides a range, from the earliest possible date the vendor will begin work and the latest date it should be finished in each area (Beaver Creek/Lake Montezuma, Cornville, Mayer/Cordes Junction, and Paulden). As the project continues, more exact information will be made available through monthly news updates provided by Yavapai County. All of which will be available on this site. The schedule is below:

# Yavapai County – Project Schedule

6/30/2022

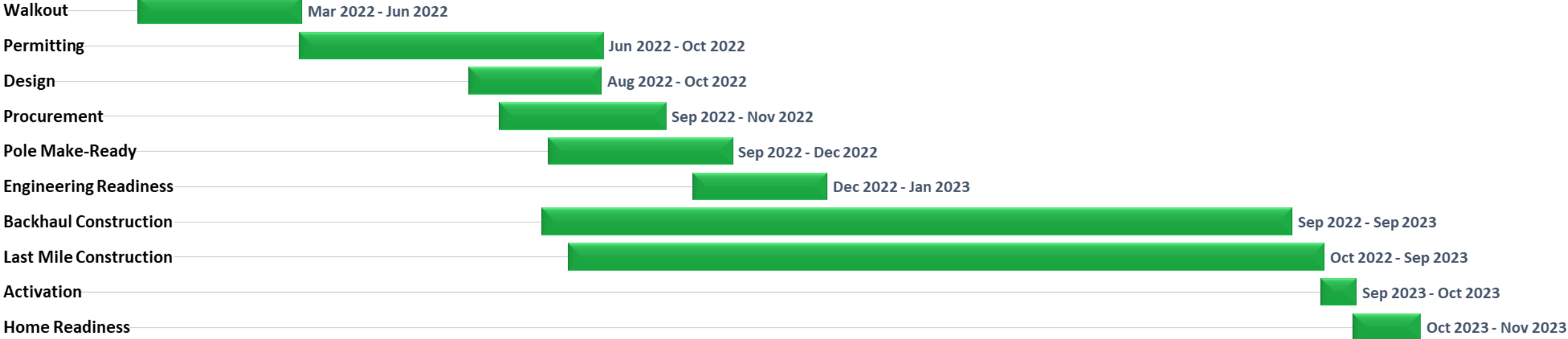
# Yavapai County Overall Project Schedule



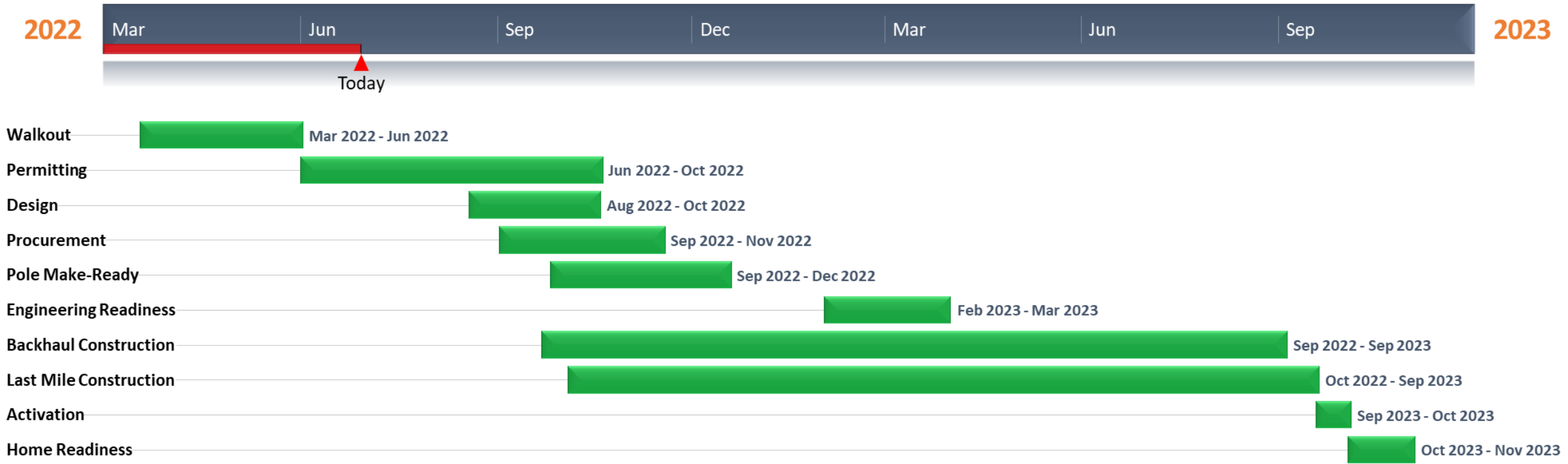
# Rimrock

2022

2023



# Mayer



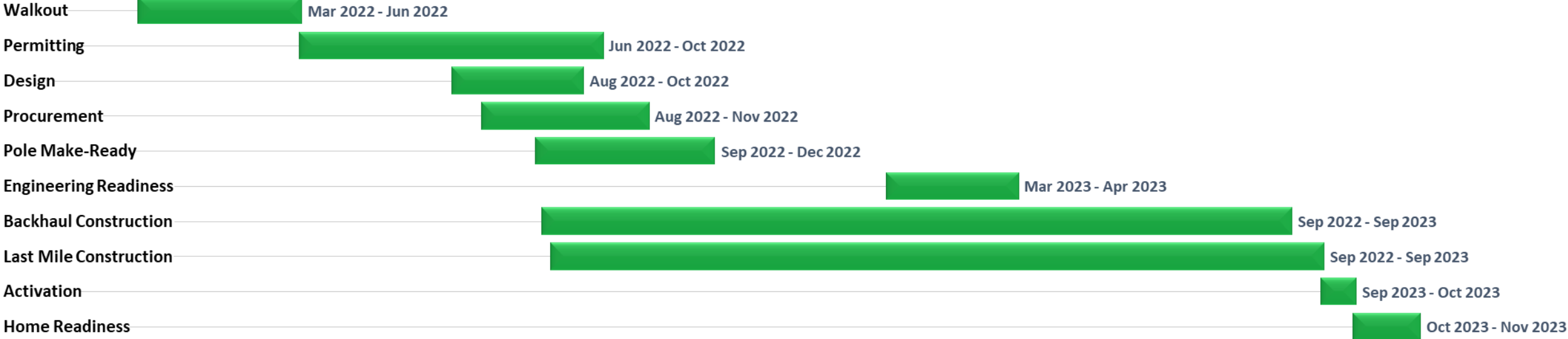
# Cornville

2022

2023



Today



# Paulden

2022

2023

